



# MONTHLY MEMBERSHIP PROGRESS REPORT

District 315B1

Results as of: 04/30/2018

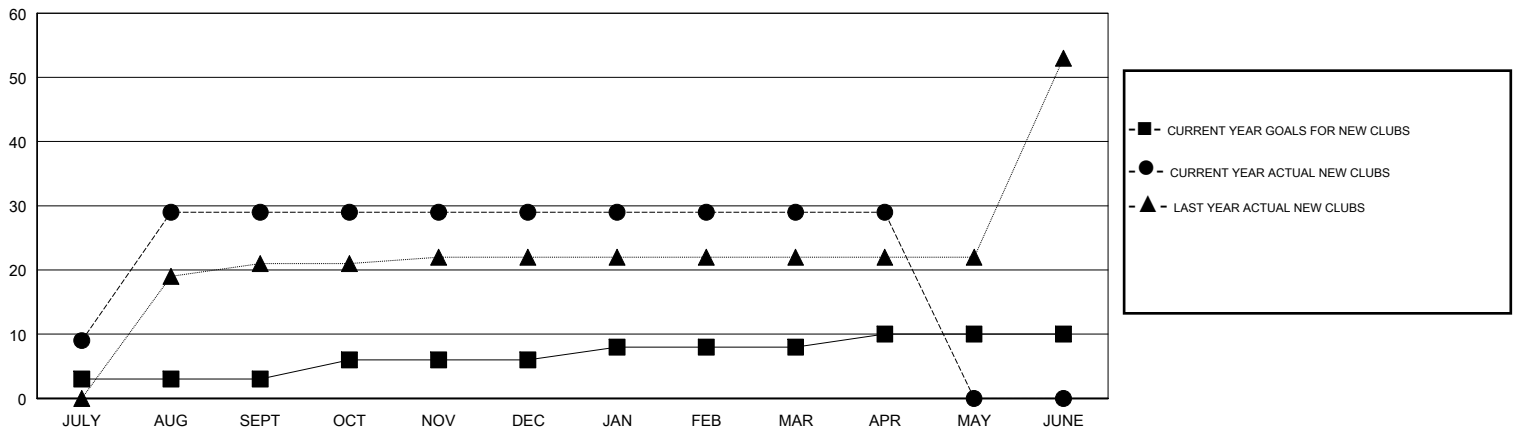
GMT: SWADESH RANJAN SAHA

LOCATION REP OF BANGLADESH

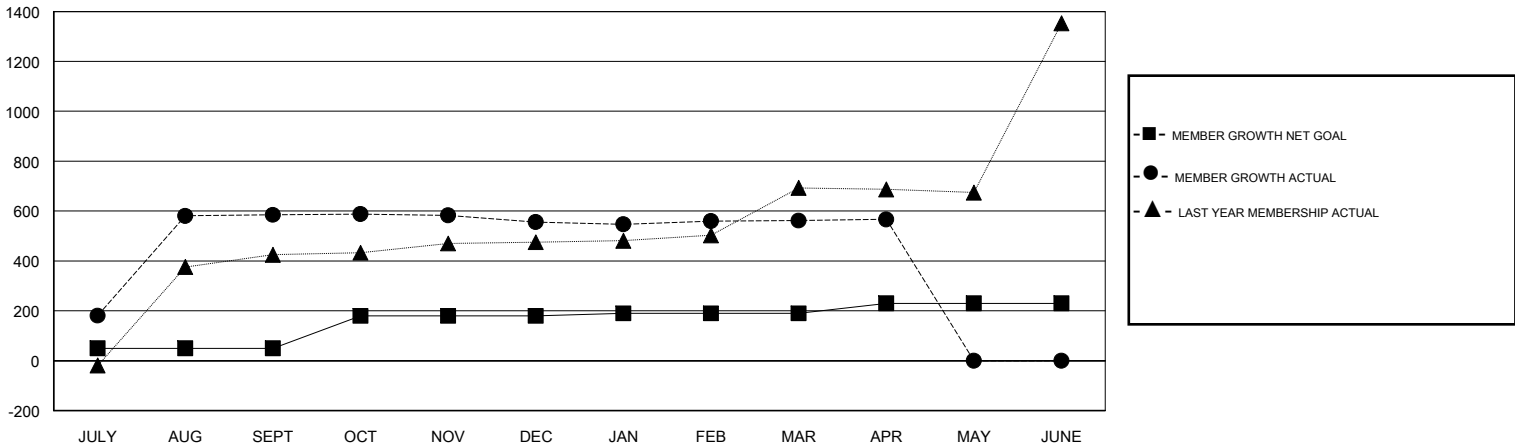
GMT CA

Clubs				Members			
RESULTS FOR 2017-2018				RESULTS FOR 2017-2018			
QUARTER	NEW CLUB GOAL	NEW CLUBS	DROPPED CLUBS	QUARTER	MEMBER GROWTH NET GOAL	MEMBER GROWTH ACTUAL	DROPPED MEMBERS ACTUAL (including transfers)
JULY/AUG/SEPT	3	29	0	JULY/AUG/SEPT	50	592	6
OCT/NOV/DEC	3	0	1	OCT/NOV/DEC	130	14	43
JAN/FEB/MAR	2	0	1	JAN/FEB/MAR	10	38	19
APR/MAY/JUNE	2	0	0	APR/MAY/JUNE	40	8	3

GOALS AND ACTUAL NEW CLUBS CUMULATIVE



GOALS AND ACTUAL MEMBERS CUMULATIVE



DROPPED CLUBS: 2	49 CLUBS OF 193 ADDED 1 OR MORE NEW MEMBERS	<u>GENDER DISTRIBUTION</u>	
DROPPED MEMBERS		MALE	3,524 (81.20%)
DECEASED	2	FEMALE	816 (18.80%)
CLUB CANCELLED	32	Women Percentage Fiscal Year Goal: 25%	
OTHER	37	TOTAL FAMILY UNIT MEMBERS	1,878
TOTAL	71	FAMILY MEMBERS PAYING HALF DUES	1,373

[CLICK HERE FOR CUMULATIVE MEMBERSHIP DATA](#)